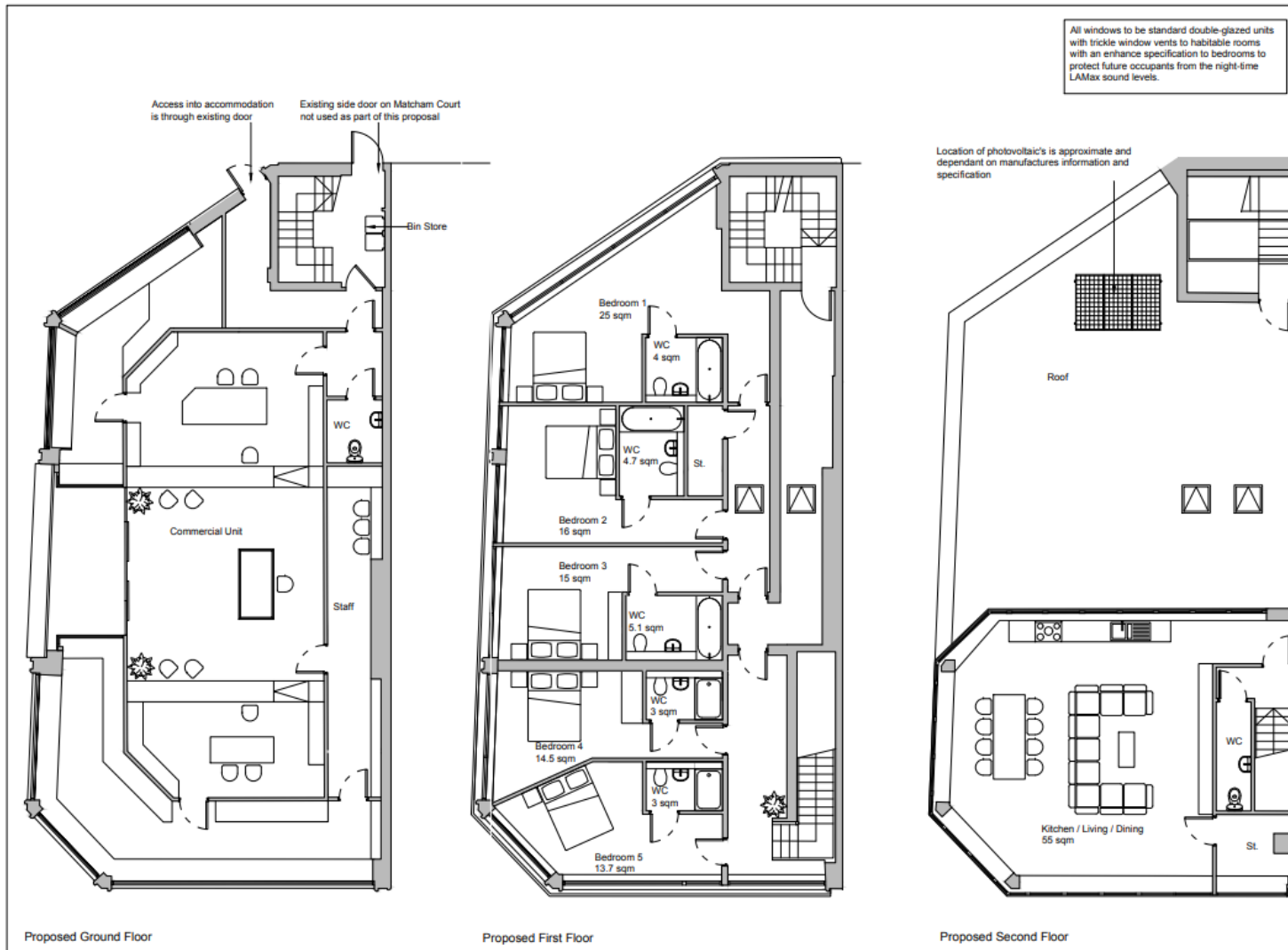


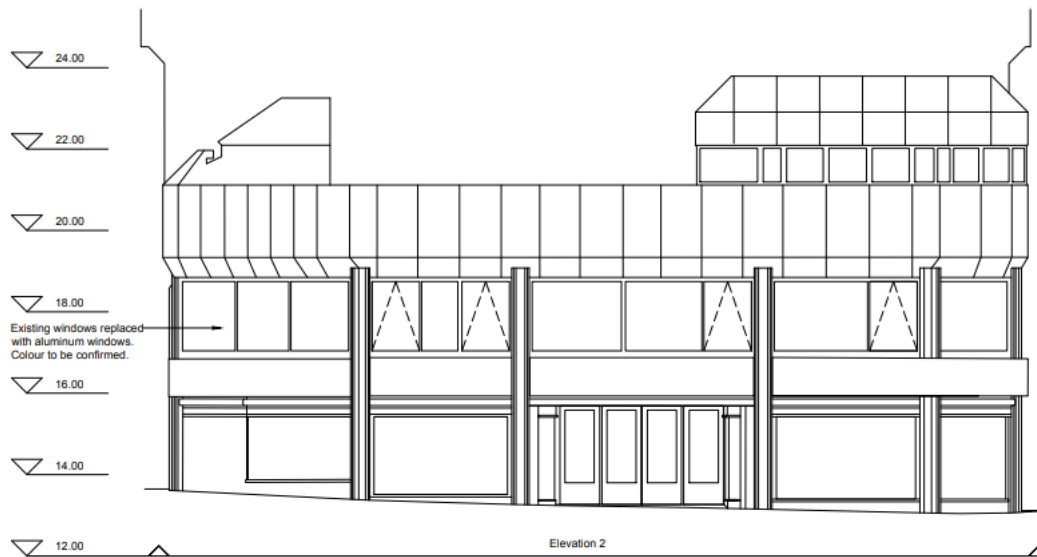
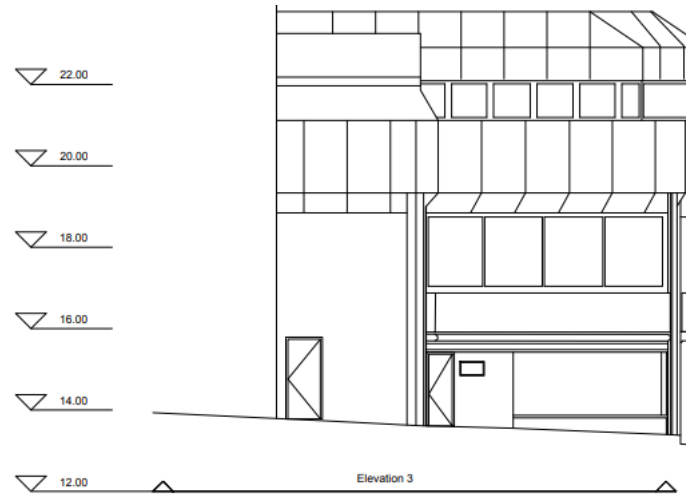
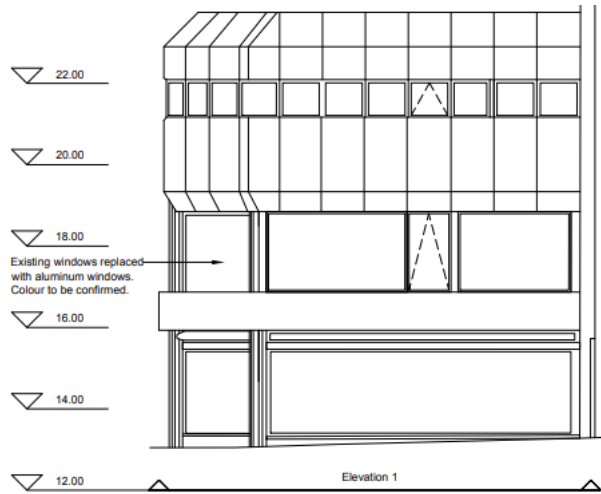
Location Plan



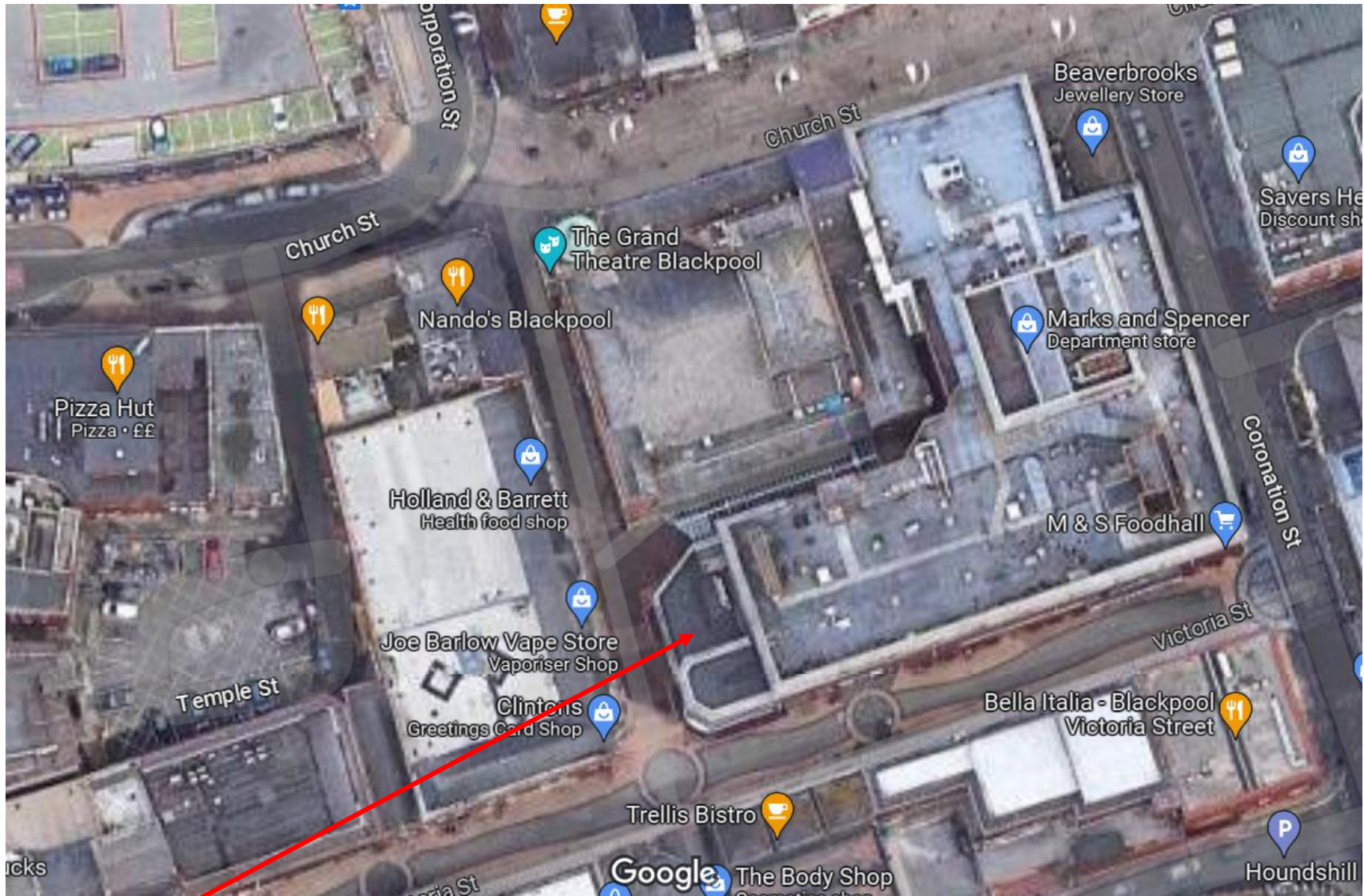
Proposed Floor Plans



Proposed Elevations



All windows to be standard double-glazed units with trickle window vents to habitable rooms with an enhance specification to bedrooms to protect future occupants from the night-time L_AMax sound levels.



Application site





Proposed access door to holiday flat (outside gate)



Photograph showing a HGV loading/unloading in Matcham Court overhanging into Corporation Street. Access door visible.

